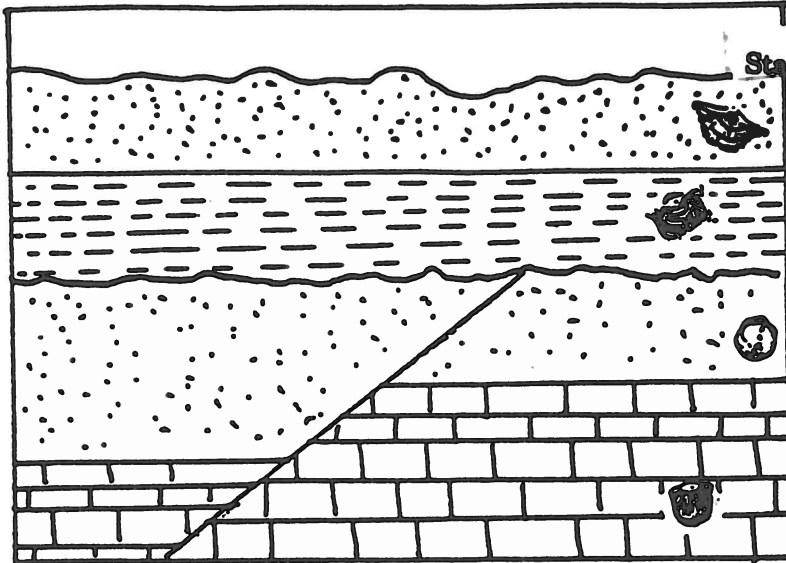


1

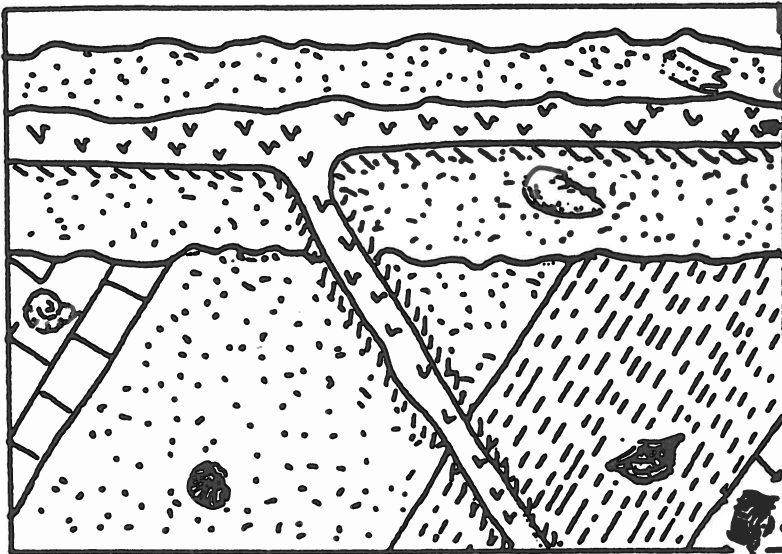
The sketches represent hypothetical cross sections. The fossils found in each layer are keyed on the attached sheet. Write your answers in the space beside each section.



State as the Period from the Geologic Time Scale.

1. a) Give the ages of the layers.
- b) Give the possible age of the fault.

2

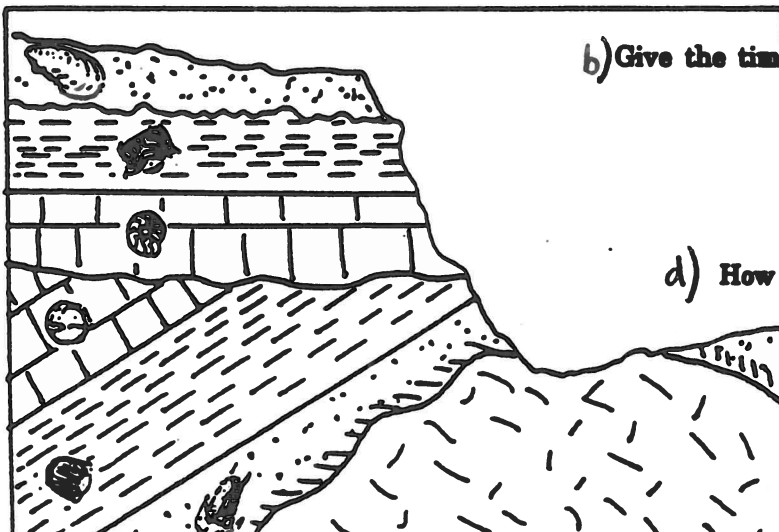


Give the Period and the possible span of years.

Is A a dike, sill, or a flow? How do you know?

- d) What is the age of the intrusion?
- e) What is a surface such as B called?
- f) When did the tilting occur?

3



3. a) Give the ages of the layers as the Period.

b) Give the time in years that the intrusion could have occurred.

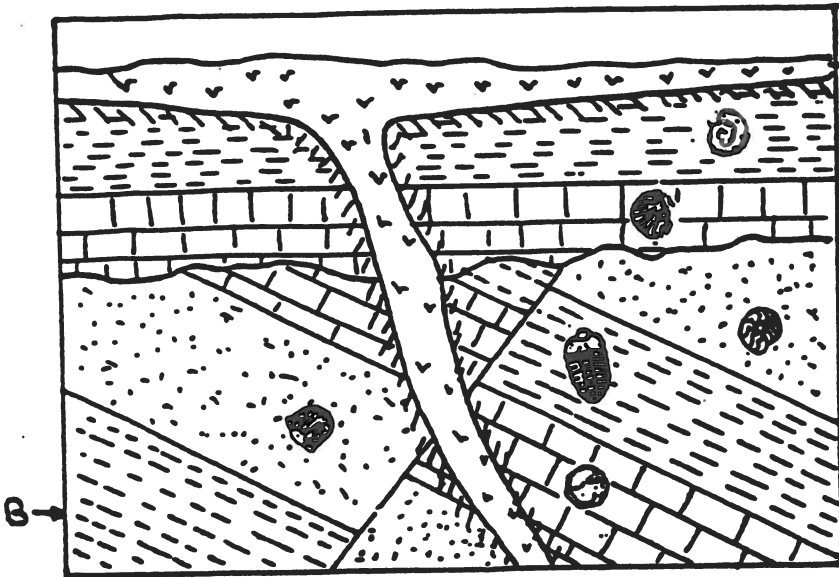
c) When did the tilting occur?

d) How many layers are missing in the upper portion?

e) Name them. Why are they missing?

4

4. a) Give the ages of the layers as the Period.

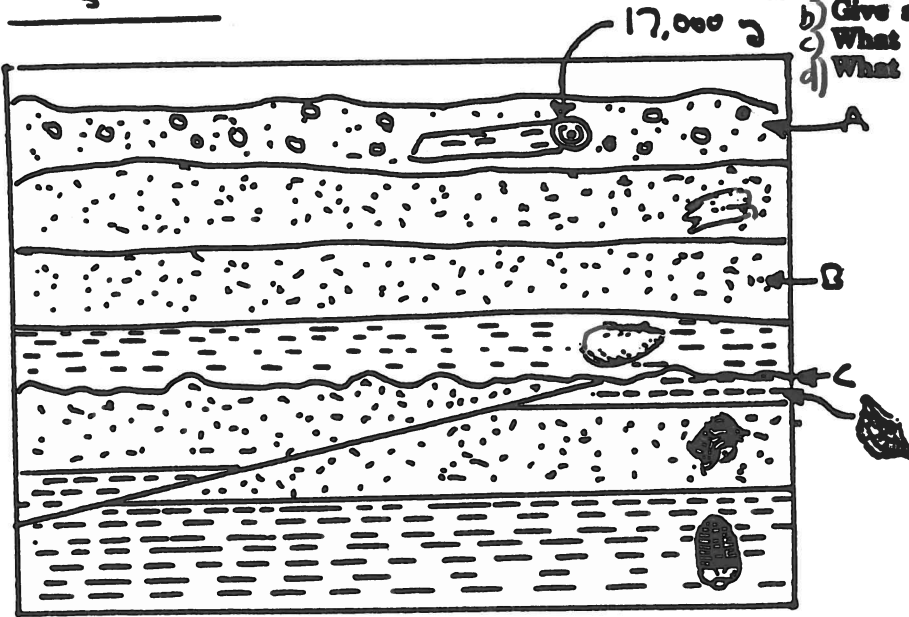


b) What happened at A ?

c) Is the age given for the volcanic rock consistent with the layers?

5

5a) Give an age for A.
 b) Give a possible age for B.
 c) What is missing at C?
 d) What type of fault is it?



6

6. a) Explain what happened here.

