

GEOLOGY 12: RELATIVE AGES EXERCISE

Instructions: Match each question below with the corresponding diagram.

1.
 - a) Which principle is useful in listing relative ages for the layers shown? Explain why.
 - b) List the strata in order from oldest to youngest. Note that in a column the youngest is usually listed on top.

2.
 - a) Complete the list in the column.
 - b) Which event occurred first?
 - c) Which event occurred last?
 - d) When did the tilting take place?

3.
 - a) Complete the list.
 - b) Which two events occurred at **P**?
 - c) What is feature **P** called?

4.
 - a) What occurred first?
 - b) Which 3 events occurred between the depositions of **A** and **L**?
 - c) What was the last event to have occurred?

5.
 - a) Complete the list.
 - b) Which principle allowed you to place **A** in the correct order in the series?
 - c) What is **A** called?

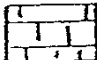
6.
 - a) Complete the list.
 - b) Which 2 events occurred at **Y**?
 - c) What could have occurred between **B** and **C**?
 - d) Which came first: dike **X** or the tilting of units **A** to **F**? How do you know?

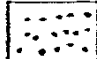
7.
 - a) Which is the oldest?
 - b) What type of fault is **Z**? How do you know?
 - c) Which 2 events happened between **X** and **N**?

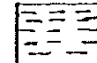
8.
 - a) List in conventional order (as in #1b).
 - b) What type of feature is **E**?
 - c) What 2 features would you notice along the margins of **A**? Why?

9.
 - a) List the plutonic and volcanic features in order from oldest to youngest.
 - b) What are *two* pieces of evidence for the order of dikes **C** and **D**?

Legend for Rock Types:

Limestone - 

Sandstone - 

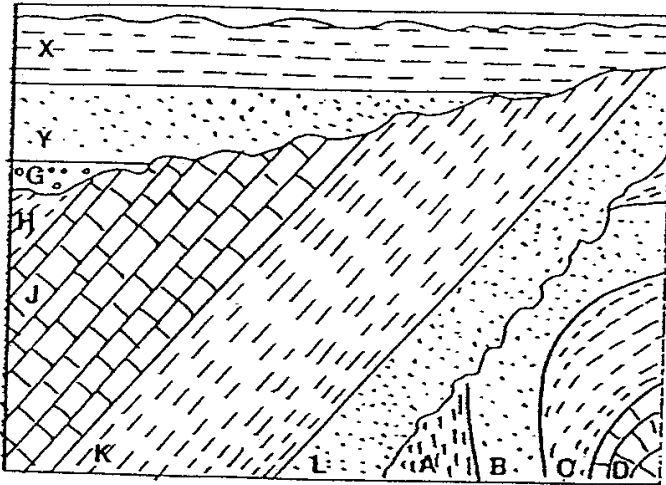
Shale - 

Conglomerate - 

Volcanic - 

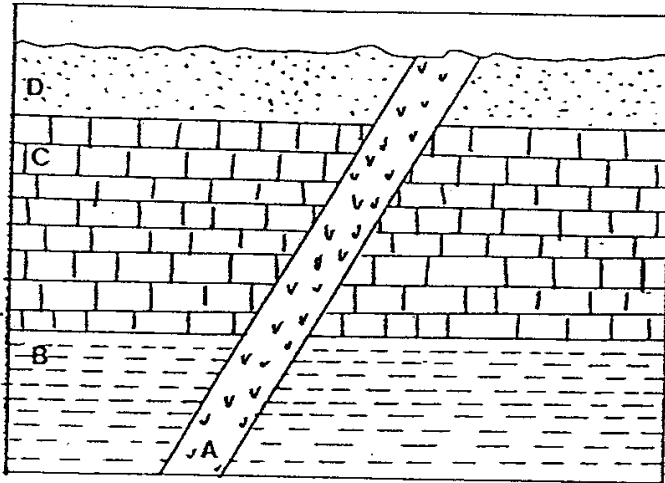
Plutonic - 

4



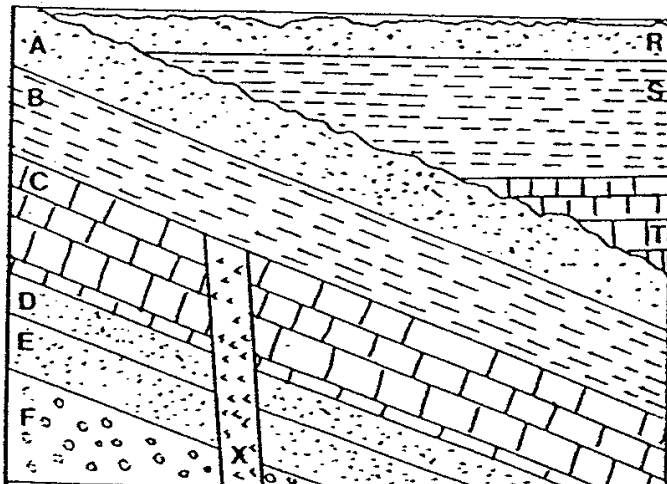
- (a) _____
- (b) _____
- _____
- _____
- (c) _____

5



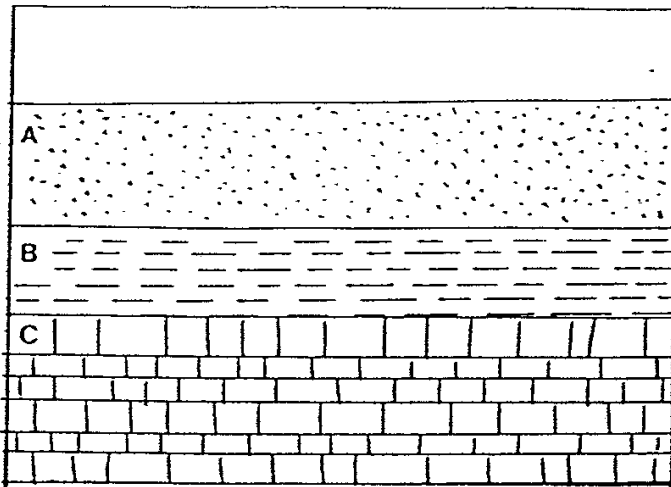
- (a) youngest _____
- _____
- _____
- (b) _____
- _____
- _____
- (c) _____

6



- (a) _____ youngest
- _____
- _____
- _____
- _____
- _____ oldest
- (b) _____
- (c) _____
- _____
- (d) _____

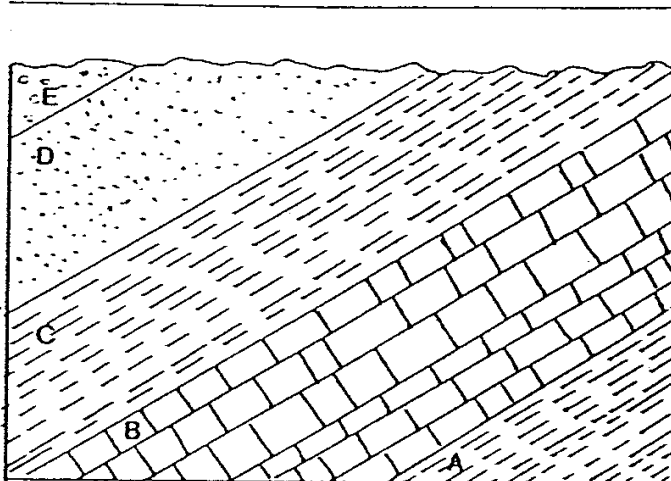
1



(a) _____

(b) _____

2



(a) youngest _____

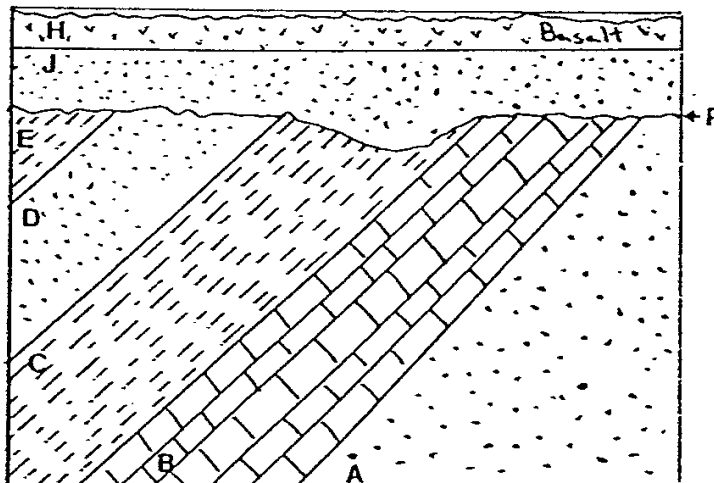
 oldest _____

(b) _____

(c) _____

(d) _____

3



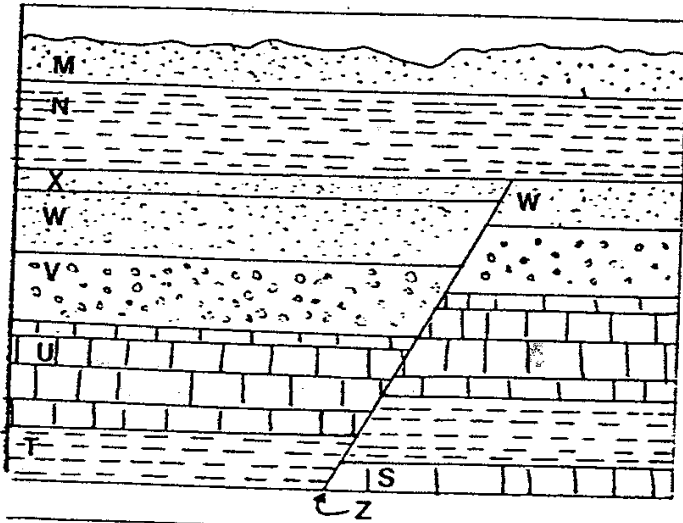
(a) youngest _____

 oldest _____

(b) _____

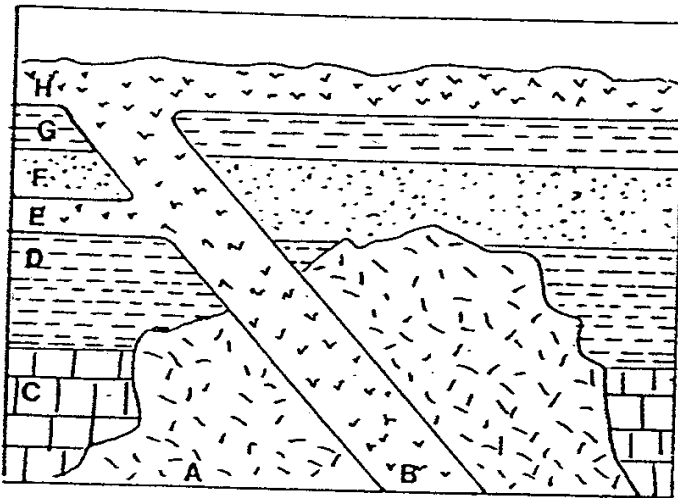
(c) _____

7



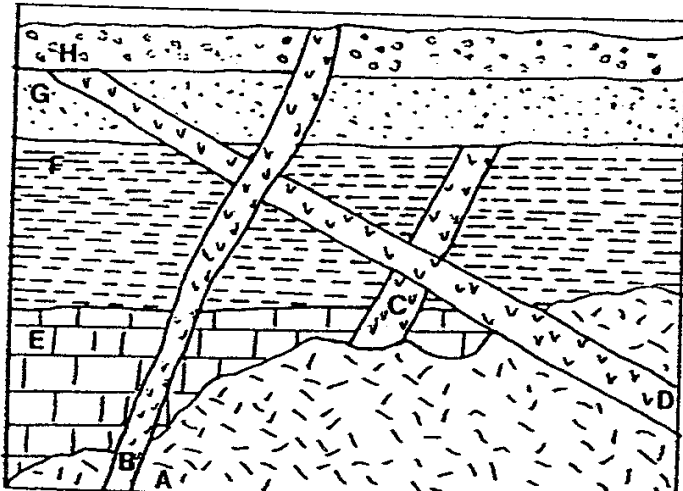
- (a) _____
- (b) _____
- (c) _____

8



- (a) _____
- (b) _____
- (c) _____

9



- (a) _____
- (b) _____